

# URW-806-3

(8.0t x 1.7m) / (6.0t x 3.0m)

- Total width 1.67m
- Max working radius 18.6m
- Diesel powered and optional mains electric
- Zero length increase with electric option
- Radio remote control as standard
- Working area limitation (optional)
- Stowable fly (extension) jib
- Searcher hook
- Intelligent throttle activation for economy and ecology



Optional bellypack radio remote control



Standard safe load indicator



Optional variable footprint safe load indicator

Capacity 8.0t x 1.7m

Max lifting height with jib 27.8m

Max. lifting height 19.5m

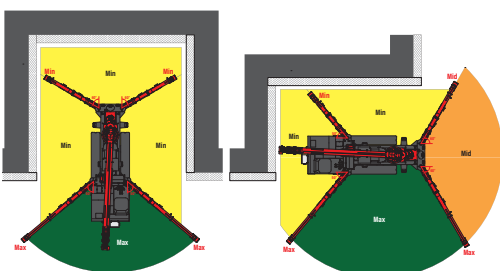
Max. boom length 19.2m

Jib capacity 1000kg

Weight 8520 - 8670kg  
(Depending on fuel option)

With the ability to lift up to 8 tonnes, the URW 806-3 is able to lift to a maximum hook height of 27.8 metres, an extra 5 metres more than the standard model. This additional hydraulic jib/searcher hook makes it a truly versatile machine and provides that extra reach for tricky lifting projects. The UNIC URW-806-3 can be controlled from the operators driving seat or by a fully functional radio remote control for precise placement of loads. The optional Bellypack radio remote control also offers operators unrivalled control and precision.

## OPTIONAL VARIABLE FOOTPRINT INCLUDING SLEW & HEIGHT LIMITATION



## CRANE SPECIFICATIONS

Crane capacity	capacity:	8.0t x 1.7m
Max working radius	max:	18.6m (21m with hydraulic fly jib)
Max lifting height	approx:	19.5m (25.2m with hydraulic fly jib, 27.8m with fixed hook)
Rope length	max:	17.7m (6 fall), 23.75m (4 fall), 49.5m (2 fall), 101m (1 fall)
Dimensions	folded:	5610mm (l) x 1670mm (w) x 2185mm (h)
Weight	unladen:	8520kg (8670kg with electric option)
Point loadings	Due to the many variables involved, point loadings are only available on request	
Hook speed	approx:	11m/min (with 5 layers and 6 falls)
Telescopic system	boom length:	4.80 - 19.20m
	telescoping speed:	14.4m/52 seconds
	boom type:	6 section hydraulically telescoping boom, hexagonal box construction
Derricking angle/speed	approx:	0 - 80° / 16.0 seconds
Slewing angle/speed	approx:	360° (continuous) 2.5min rpm
Traction system	drive:	hydrostatic 2-speed, stepless forward and reverse
	travel speed:	0 - 2.9km/h
	gradeability:	± 20° (vertical) 20° (traverse)
	track ground length:	2240mm
	track ground pressure:	43.1kPa (0.44kg/cm²)
	track width:	400mm
Engine	manufacturer:	Kubota
	fuel:	diesel (electric dual power option)
	maximum output:	18.5kW/2200rpm
	starting method:	electric
	tank capacity:	74 litres
Electric motor	power:	75kW
	voltage:	400v AC 50/60hz
Standard equipment	computer controlled moment limiter (safe load indicator), radio remote control, overwinding alarm, computer controlled intelligent voice warning system, multi-function operation by radio remote control, intelligent throttle activation, automatic hook stow, overload warning alarms, overload warning lamps, 1000kg capacity hydraulic fly jib	
Optional equipment	2 fall hook block, mains electric dual power (440v), low marking tracks, slew limitation, data logging, forward facing camera, variable footprint option, working area limitation, bellypack radio remote control	

# MINI SPIDER CRANE

## WITH HYDRAULIC JIB

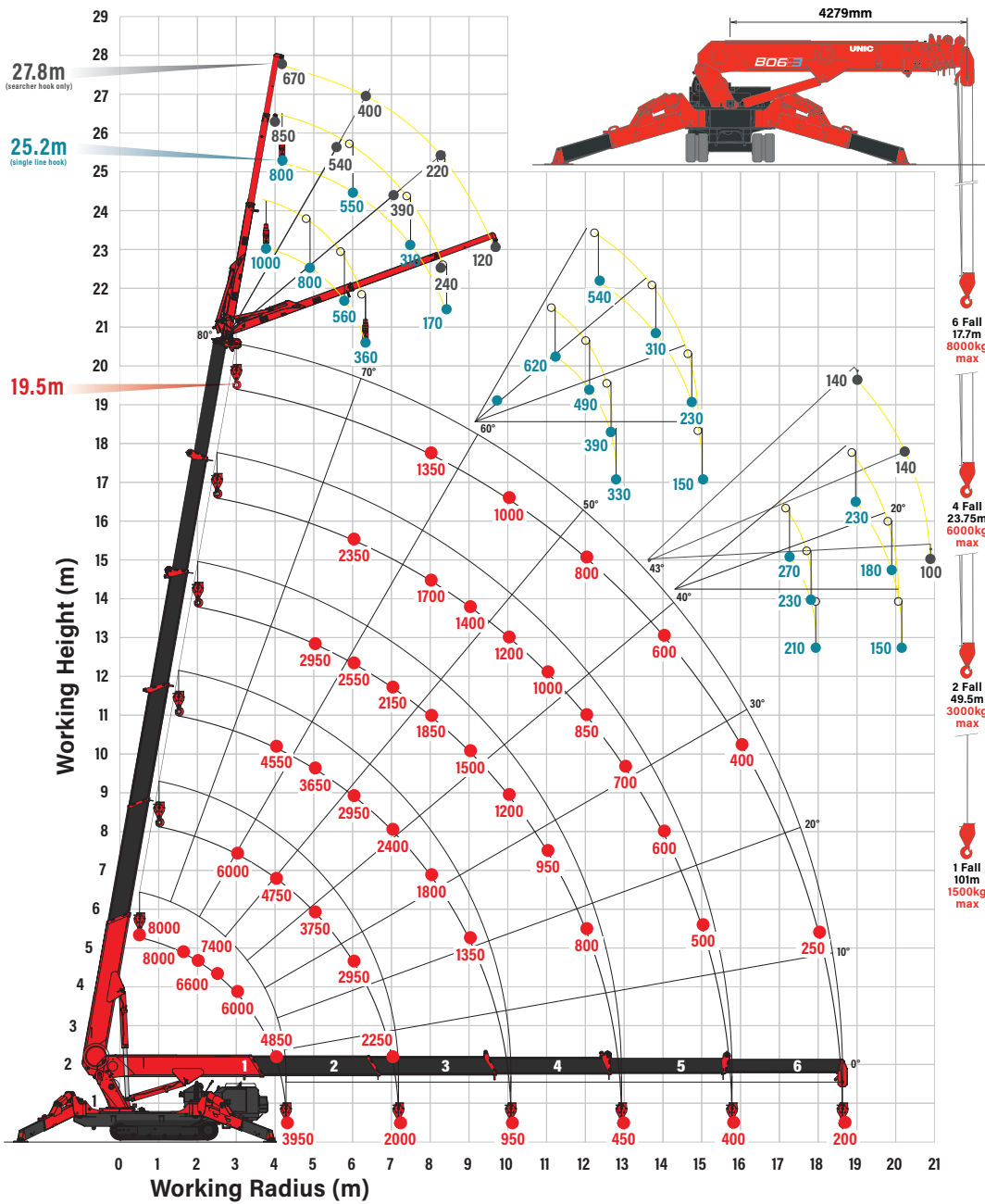


Spec Sheet

# UNIC

CRANES EUROPE

### RATED LOADS (kg) & HOOK FALLS

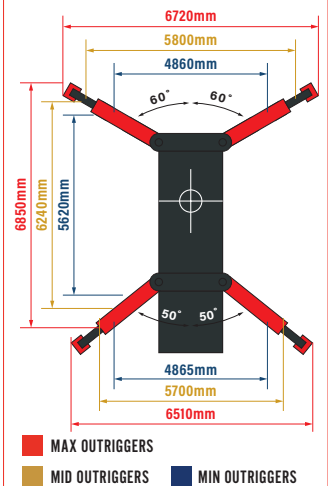


### HYDRAULIC JIB

Capacity	1000kg (single line) 850kg (searcher hook)
Length	6.0m (single line) 7.50m (searcher hook)
Weight	530kg
Tilt angles	0°, 20°, 40°, 60°



### OUTRIGGER MIN, MID & MAX



### DIMENSIONS

