



# LITHIUM-ION URW-345 POP-UP CRANE



**UNIC**  
CRANES EUROPE

CAPACITY: 3.2t x 2.2m    MAXIMUM LIFTING HEIGHT: 16.5m    MAXIMUM WORKING RADIUS: 15.7m  
SLEWING RANGE: 360° continuous    WEIGHT: 3670kg

# URW-345

(3.2t x

- Total width 0.75m
- Max working radius 15.7m with hydraulic fly jib
- Maximum lifting height 16.5m with hydraulic fly jib
- Maintenance free lithium-ion battery powered
- Continuous operation while charging
- Multi-position configurable outriggers
- Auto-levelling system making setup easy
- Pick & carry capacity: 500kg
- 5 section derricking boom & 4 section telescoping jib
- Unique pop-up column reduces rear swing overhang
- Full colour high resolution SLI
- Intelligent voice warning system
- Radio remote control with feedback display as standard
- Intelligent power activation for economy and ecology
- Low noise output



Radio remote control



High resolution colour SLI

## FOUR-SECTION TELESCOPIC HYDRAULIC JIB



Capacity	1000kg (max)
Length	1980-5740mm
Extending Speed	3.76m / 24s
Tilt angles	10°, 0°, -10°, -20°, -30°, -40°, -50°, -60°, -70°, -80°

The URW-345 Pop-Up is the result of continued innovation. With a max capacity of 3.2t and a maximum lifting height of 16.5m, this lithium-ion battery mini spider crane is packed with new features that make it exceptional for working in enclosed areas.

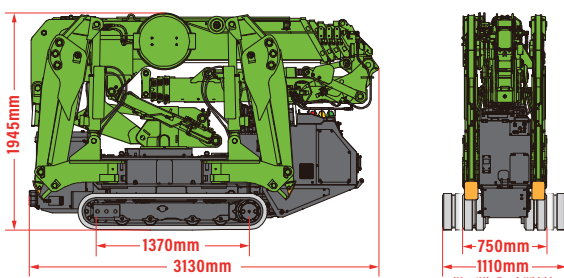
The most unique feature of the URW-345 is the ingenious pop-up column. With the king-post positioned centrally on the chassis, the crane gives users increased stability. The design of the pop-up column also offers operators the ability to work closer to obstacles than its closest competitor due to the minimal overhang of the column.

With expandable tracks as standard for improved stability, the URW-345 can be easily manoeuvred into position, by taking the width from 1100mm to 750mm, the crane can fit through suitable doorways.

With the four-section telescoping hydraulic jib, the URW-345 increases its lifting height from 10.9m to 16.5m and maximum working radius from 9.82m to 15.7m. The addition of variable outriggers means this adaptable crane can fit into some of the most confined working areas.

The URW-345 is fully powered by a rechargeable lithium-ion battery which can also be used while still charging.

## DIMENSIONS



## CRANE SPECIFICATIONS

Crane capacity	max:	3.2t x 2.2m
Max working radius	max:	9.82m (15.7m with hydraulic jib)
Max lifting height	approx:	10.9m (16.5m with hydraulic jib)
Rope length	rope:	8mm x 103m
Dimensions	folded:	3130mm (l) x 750mm (1150mm) (w) x 1940mm (h)
Weight	unladen:	3670kg
Point loadings	Due to the many variables involved, point loadings are only available on request	
Hook speed	approx:	6.8 (10.5)m/min (4-fall), 13.6 (21.4)m/min (2-fall), 27.2 (42.8)m/min (1-fall)
Main boom	boom length:	2.895 - 10.075m
	telescoping speed:	718m/36 seconds
	boom type:	5 section hydraulically telescoping boom, box construction
Jib	boom length:	1.98 - 5.74m
	telescoping speed:	3.76m/24 seconds
	boom type:	4 section hydraulically telescoping boom, box construction
Slewing angle/speed	approx:	360° (continuous) 1.2min rpm
Traction system	drive:	hydrostatic 2-speed, stepless forward and reverse
	travel speed:	0 - 2.3km/h
	gradeability:	± 15° (vertical) 15° (traverse)
	track ground length:	1370mm
	track ground pressure:	65.6kPa (0.67kg/cm <sup>2</sup> )
Battery	type:	Lithium-ion battery
	pack voltage:	DC 51.2V
Battery charger	pack capacity:	159Ah
	pack composition:	4 series x 3 parallel
	input voltage:	AC95-265V (50-60Hz), single-phase
	input current:	16A (AC200V), 15A (AC100V)
	output voltage:	DC48V
Standard equipment	output current:	60A (AC200V), 30A (AC100V)
	charging time:	4.4 hr (AC200V), 7.9 hr (AC100V),
	computer controlled moment limiter (safe load indicator), radio remote control with feedback display, overwinding alarm, computer controlled intelligent voice warning system, multi-function operation by radio remote control, intelligent power activation, automatic hook stow, overload warning lamps, working area limitation, variable outriggers, virtual wall, slew, height and radius range limitation	

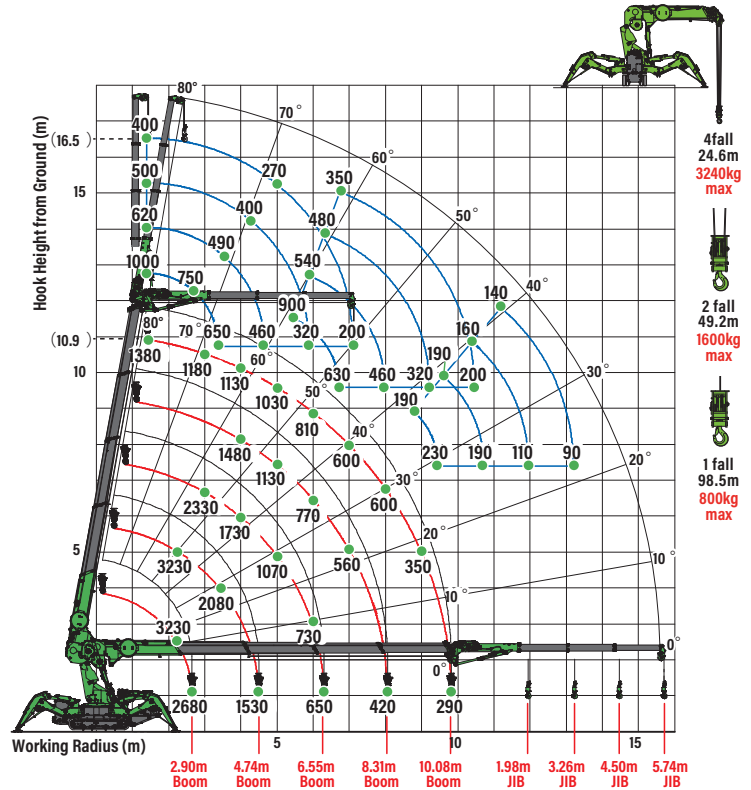
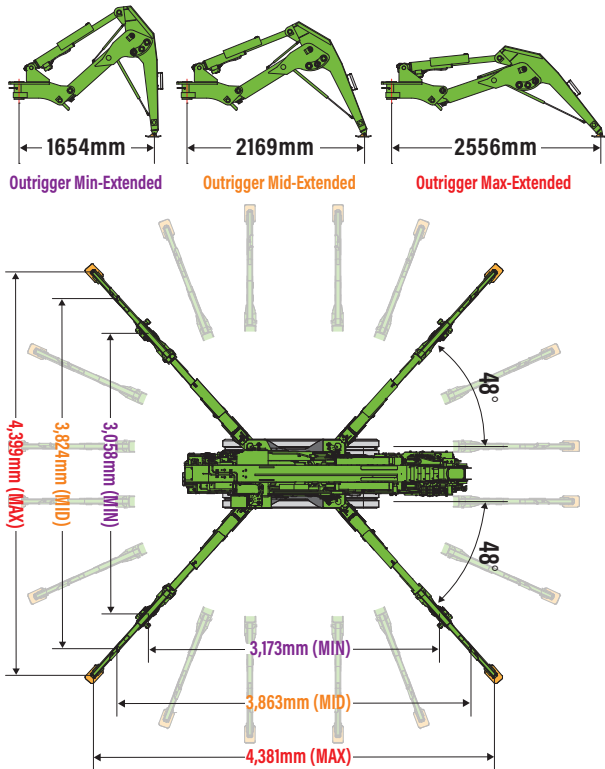
[www.uniccranes.com](http://www.uniccranes.com)

# 2.2m)

# LITHIUM-ION POWERED POP-UP MINI SPIDER CRANE



## OUTRIGGER DIMENSIONS, HOOK FALLS & WORKING RADIUS



### FIRST STAGE 2.895 m BOOM LENGTH

Working radius	m	up to 1.0	1.5	2.2	2.5	2.6	2.645	
Outrigger	Max-extended	kg	3230	3230	3230	3030	2800	2680
	Mid-extended	kg	3230	3230	3230	3030	2800	2680
	Min-extended	kg	3230	3230	3230	2670	2440	2320

### SECOND STAGE EXTENDED 2.895 - 4.74 m BOOM LENGTH

Working radius	m	up to 1.0	1.5	2.2	2.5	2.6	2.7	3.0	3.5	4.0	4.49	
Outrigger	Max-extended	kg	3230	3230	3230	2880	2780	2680	2480	2080	1770	1350
	Mid-extended	kg	3230	3230	3230	2880	2780	2680	2480	1820	1290	1000
	Min-extended	kg	3230	3230	3230	2480	2240	2050	1570	1140	810	630

### THIRD STAGE EXTENDED 4.74 - 6.545 m BOOM LENGTH

Working radius	m	up to 1.0	1.5	2.0	2.5	2.6	2.7	3.0	3.5	4.0	4.5	5.0	5.5	6.0	6.295
Outrigger	Max-extended	kg	2330	2330	2330	2330	2330	2130	1880	1730	1390	1070	910	730	650
	Mid-extended	kg	2330	2330	2330	2330	2330	2130	1820	1310	1050	800	690	540	480
	Min-extended	kg	2330	2330	2330	2330	2250	2050	1590	1150	830	680	500	450	330

### FOURTH STAGE EXTENDED 6.545 - 8.31 m BOOM LENGTH

Working radius	m	up to 1.107	1.5	2.0	2.5	2.6	2.7	3.0	3.5	4.0	4.5	5.0	5.5	6.0	6.5	7.0	7.5	8.0	8.06
Outrigger	Max-extended	kg	1480	1480	1480	1480	1480	1480	1480	1480	1280	1130	950	770	690	560	480	420	420
	Mid-extended	kg	1480	1480	1480	1480	1480	1480	1480	1380	1090	860	740	590	530	420	360	310	310
	Min-extended	kg	1480	1480	1480	1480	1480	1480	1200	890	730	560	490	380	340	260	220	180	180

### FIFTH STAGE EXTENDED 8.31 - 10.075 m BOOM LENGTH

Working radius	m	up to 1.414	1.5	2.0	2.5	2.6	2.7	3.0	3.5	4.0	4.5	5.0	5.5	6.0	6.5	7.0	7.5	8.0	8.5	9.0	9.5	9.825	
Outrigger	Max-extended	kg	1380	1370	1300	1250	1240	1220	1180	1150	1130	1080	1030	950	810	720	600	540	450	430	350	320	290
	Mid-extended	kg	1380	1370	1300	1250	1240	1220	1180	1150	1130	1080	900	770	620	560	460	420	340	330	260	230	210
	Min-extended	kg	1380	1370	1300	1250	1240	1220	1180	1150	930	760	600	520	410	370	290	270	210	200	150	130	110

### PICK & CARRY RATED LOADS

Boom-sections extended: 1

Working Radius (m)	1.0	1.5	2.0	2.645
Net Rated Loads (kg)	500	500	500	270

Boom-sections extended: 1 + 2

Working Radius (m)	1.0	2.0	3.0	3.5
Net Rated Loads (kg)	500	500	190	90

The capacities shown above are with the main boom only. Due to the many variables involved such as outrigger positions, working areas, lifting height, working radius and more, the figures above should be used as a guide only.

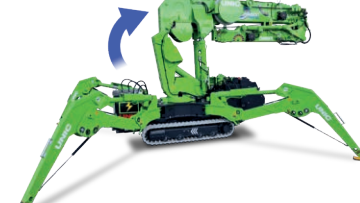
## UNIQUE FEATURES OF THE URW-345 POP-UP SPIDER CRANE



**1** The compact URW-345 with its expandable tracks for improved stability can be manoeuvred easily into position by the operator. Taking the width from 1100mm to 750mm gives users the option to manoeuvre through suitable doorways.



**2** The variable outriggers of the URW-345 give operators the ability to position the outriggers where needed in confined areas or around obstacles on-site. Additionally, with the variable outriggers users can unlock even more performance with Max+ capacities.

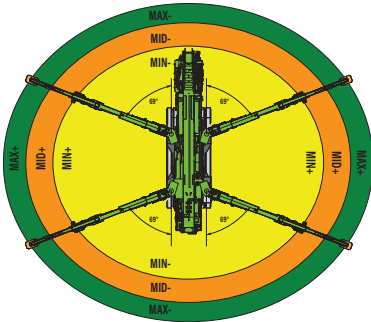
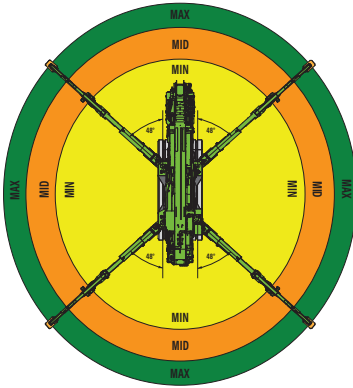
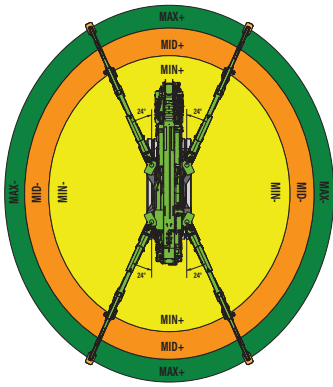


**3** The position of the unique pop-up column means the URW-345 has increased stability. It also offers the ability to work closer to walls and obstacles than its closest competitor, due to the minimal overhang of the column.

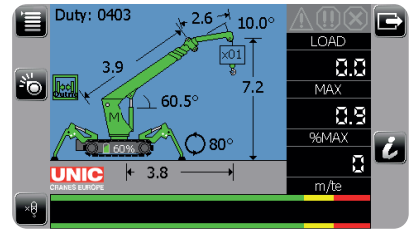


**4** The 1000kg capacity 4-section telescopic hydraulic jib of the URW-345 takes the maximum hook height from 10.5m to 16.5m, and the maximum working radius from 9.82m to 15.7m.

## VARIABLE OUTRIGGER LOAD EXAMPLES



## FOUR SECTION JIB EXAMPLE LOAD TABLES (KG) - OUTRIGGERS AT MAXIMUM



Jib 1 - Main Boom 5

10.075M	TILT ANGLE									
	10°	0°	-10°	-20°	-30°	-40°	-50°	-60°	-70°	-80°
80°	1000	1000	-	850	-	750	-	700	-	650
70°	1000	900	-	850	-	750	-	700	650	
60°	900	850	-	720	-	660	-	630		
50°	440	410	-	370	-	350	350			
40°	230	210	-	200	-	190				
30°	110	100	-	100	100					
20°	50	40	40	40						
10°	10	10	10							
0°										

Jib 2 - Main Boom 5

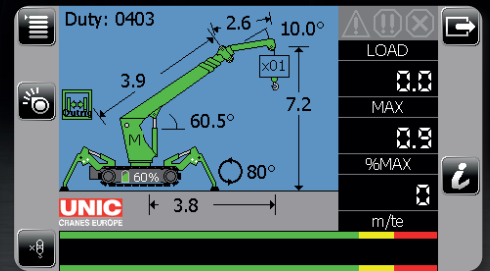
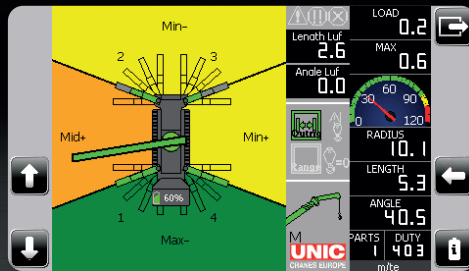
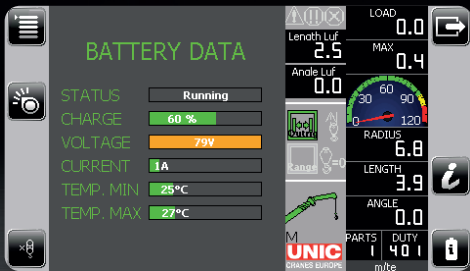
10.075M	TILT ANGLE									
	10°	0°	-10°	-20°	-30°	-40°	-50°	-60°	-70°	-80°
80°	620	600	-	520	-	490	-	470	-	460
70°	600	540	-	500	-	480	-	460	460	
60°	540	520	-	490	-	470	-	460		
50°	380	340	-	290	-	260	260			
40°	190	170	-	150	-	140				
30°	80	80	-	70	60					
20°	30	20	20	20						
10°										
0°										

Jib 3 - Main Boom 5

10.075M	TILT ANGLE									
	10°	0°	-10°	-20°	-30°	-40°	-50°	-60°	-70°	-80°
80°	500	500	-	450	-	400	-	360	-	320
70°	500	480	-	430	-	380	-	330	320	
60°	480	450	-	400	-	360	-	320		
50°	330	290	-	240	-	220	210			
40°	160	140	-	120	-	110				
30°	70	60	-	50	50					
20°	20	10	10	10						
10°										
0°										

Jib 4 - Main Boom 5

10.075M	TILT ANGLE									
	10°	0°	-10°	-20°	-30°	-40°	-50°	-60°	-70°	-80°
80°	400	370	-	320	-	270	-	230	-	200
70°	370	350	-	310	-	250	-	210	200	
60°	350	320	-	270	-	230	-	200		
50°	300	260	-	200	-	180	180			
40°	140	120	-	100	-	90				
30°	60	50	-	40	40					
20°	10	10	-							
10°										
0°										



# UNIC

## CRANES EUROPE

**HEAD OFFICE:** GGR UNIC House, Pegasus Way, Haddenham Business Park, Haddenham, Buckinghamshire, HP17 8LJ  
**Telephone:** +44 (0)1844 202071

**UK NORTHERN DEPOT:** Presentation House, Broadgate, Broadway Business Park, Oldham, OL9 0JA  
**Telephone:** +44 (0)161 683 2580

**Email:** sales@uniccranes.com **Web:** www.uniccranes.com



UNIC Cranes Europe is part of the GGR Group of Companies

The descriptions, specifications, measurements, capacities and other technical information within this product sheet are subject to change without notice, for the latest information please contact UNIC Cranes Europe.

© Copyright GGR Group 2022