



**Više od proizvoda. Partnerstvo.**

# BRKT

Side crane mower with a crane arm reach of 8 meters

BRKT is a powerful side mounted crane mower, intended for very demanding mowing in places where a large reach of the crane arm is required: embankments along waterways, canals, accumulation lakes and wide areas next to high priority roads.



# High mowing efficiency and long crane arm reach

BRKT is a side crane mower designed for very demanding mowing work, available in a crane arm configuration with a reach of 8 meters. It is intended for mowing grass, weeds, shrubs and similar vegetation on large areas along high priority roads, high embankments along waterways, canals or accumulation lakes. Efficient and reliable mowing is enabled by a telescopic crane arm made of high-quality steel, which enables the mower to achieve a total of 8 metre mowing reach.

Mounting of the crane mower laterally between the tractor axles, and the special construction of the crane arms guarantee efficient mowing even at higher speeds, lower vibrations while working and operator comfort.

Because of the longer crane arm reach, BRKT crane mower is intended for mounting on large and heavy tractors, and it is additionally secured with stabilization weights for the vehicle when using the mower.

The mower is equipped with an advanced intuitive crane arm control system, located in the vehicle cabin. The control system, depending on users' preferences, can be selectively proportional (SelectMotion) or fully proportional (TotalMotion).

The crane arm relief system allows vertical tracking of the terrain, while the floating system adjusts the position of the working head to the surface. The oil cooler located next to the hydraulic power unit prevents overheating of the hydraulic oil and ensures uninterrupted and precise operation during long mowing at high temperatures.

BRKT can be equipped with various models of professional mowing heads or working tools intended for channel maintenance or branch cutting.

In the transport position, the mower is placed at the rear of the vehicle and marked with light signals aligned with legal regulations, which ensures good visibility and safe participation in traffic.





## WHY CHOOSE BRKT CRANE MOWER?



### ✓ Mowing efficiency

The BRK is installed laterally, between the front and rear axles of the tractor, which makes it stable and safe. The operator has excellent working visibility, more comfort, and can easily avoid obstacles (traffic signs, etc).



### ✓ Extended crane arm for demanding terrains

The working reach of up to 8 meters, enabled by a telescopic crane arm, guarantees the efficient maintenance of wide areas along high priority roads and high embankments along waterways. The choice between three versions of the hydraulic power unit allows complete adaptation of the mower to the terrain.



### ✓ Simple and intuitive operation

The BRKT crane mower is available with two control systems: SelectMotion, which allows easy control of the mower's crane arm and working tools on more demanding terrains, and TotalMotion, which is primarily intended for controlling mower on difficult terrains, where continuous crane maneuvering is required.



### ✓ Total lowest cost of ownership

Its unique surface protection system, ease of use and maintenance, robust design, and high-quality materials guarantee a safe investment in the BRKT mower.

Proven durability, safety, efficiency, and simplicity, as well as the availability of spare parts and after-sales support, guarantee the lowest total cost of ownership currently available on the market.



### 1 | Operation

The mower is equipped with an advanced and intuitive crane arm control system and working tools located in the vehicle cabin. The control system, depending on the users' preferences, can be selective proportional (SelectMotion) or fully proportional (TotalMotion). The control system provides complete control over the machine and enables safe and simple mowing.

### 2 | Hydraulic power unit

Used for powering of the working tool hydraulic engine and the hydraulic cylinders for operating the crane arms. It is driven via the cardan output of the tractor on which the mower is installed.

### 3 | Crane arms

Reliable and durable, they are made out of high quality steel, with an additional telescopic crane arm with 8-metre reach. They provide excellent work results and serve as a universal carrier for various work tools.

### 7 | Swiveling mechanism

It consists of a hydraulic cylinder that allows the crane mower to quickly turn from transport to the working position. It is also a safety element when the working tool gets stuck on an obstacle.

### 8 | Rear signalization

Enables a good visibility of the crane mower and the vehicle to which it is mounted, and provides a high degree of safety for the user and all other traffic participants.

### 9 | Storage outside the season

Made easier through the use of a supporting cart that enables simple mounting and demounting of the mower. The storage cart protects the mower and the surface on which it is stored from damage.





#### **4 | Hydraulic oil cooler**

Located next to the oil tank, it prevents the hydraulic oil from overheating and ensures long-lasting and uninterrupted operation, regardless of the outside temperatures.

#### **5 | Mower mounting frame**

A specially adapted mounting frame is used to install the crane mower between the tractor axles.

The installation of the side mower is most often done in the RASCO factory. Our expert vehicle upgrade team creates a specially tailored frame for each tractor, which guarantees the stability of the overall composition, safety and smooth operation.

#### **6 | Crane mower relief system**

Ensures adapting to the uneven terrains, while the 'floating' system adjusts the position of the working head to the surface. This reduces the load on the hydraulic and mechanical construction of the mower and extends the service life of the device.

#### **10 | Working tools and attachments**

They are easy to replace, and the wide selection between tools give each RASCO crane mower the possibility of working on different terrains and maintenance of different types of vegetation.



# Intuitive control systems developed for the user

The control of the crane mower is enabled through an advanced control unit located inside the vehicle cabin. It consists of a joystick for crane arms and working tools operation, and a color display with working commands for mower relief, floating position, and additional functions.

Depending on the terrain which is being maintained, and user preferences, there are two control systems available:

## SELECTMOTION

### Selective proportional control

Selective proportional control allows easy operation of the mower's crane arm and working tool on more demanding terrains. Each movement of the joystick results in the movement of one selected hydraulic cylinder. Therefore, moving the crane arms to the desired position requires more movement of the joystick.



## TOTALMOTION

### Fully proportional control

Fully proportional control is intended for working on difficult terrains, full of obstacles, where continuous manoeuvring with crane arms is required. Control with the use of joystick allows quick changes of the crane arm position, through the movement of several cylinders in one joystick movement.



# Continuous work in all conditions

The crane mower is driven by a separate hydraulic unit driven by the power of the vehicle on which the mower is installed. Three types of hydraulic pumps can be installed in the hydraulic unit, depending on the mode of operation of the mower and the type of terrain being maintained:

### Hydraulic system with tandem gear pump

Ideal for low to medium intensity work, eg mowing grass and vegetation along roads

### Hydraulic system with tandem piston and gear pump

Ideal for medium to demanding working conditions such as mowing and maintaining vegetation along canal networks

### LS hydraulic system

Advanced hydraulic system ideal for difficult mowing conditions when the mower is running non-stop. The LS hydraulic system is designed for all-day demanding mowing work and enables fuel savings.

## Cooling of the crane mower

The specially designed oil cooler prevents the hydraulic oil from overheating and ensures long-term and uninterrupted operation of the mower, regardless of outside temperatures.



## MOWING HEADS AND WORKING TOOLS



### HYDRA

HYDRA is a combined working head for mowing and cutting vegetation up to 50 mm thick. Efficient operation of the HYDRA mowing head is enabled by the design of its key parts. The spiral distribution of the blades reduces energy consumption, and the increased opening at the back of the head allows a high flow of material, and accordingly, a higher mowing speed.

The HYDRA mowing head can be equipped with different types of blades, which enables it to adapt on any type of terrain which is being mowed.



### TORNADO

TORNADO mowing heads are an ideal choice for maintaining smaller vegetation. They are designed to provide the possibility of using two types of blades for cutting vegetation of different thickness, with a diameter of 15 to 30 mm.

The rotor design and the blade selection make TORNADO the ideal choice for the maintenance of urban areas.



### SRG

SRG are branch cutters specially designed for removing the tops of trees, as well as large and small vegetation up to 100 mm thick.



### BM

BM is a brush designed for removing grass, dirt and leftover winter season spreading agent from roads.

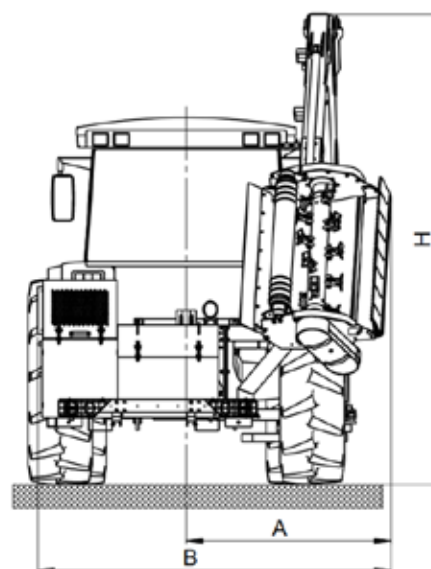
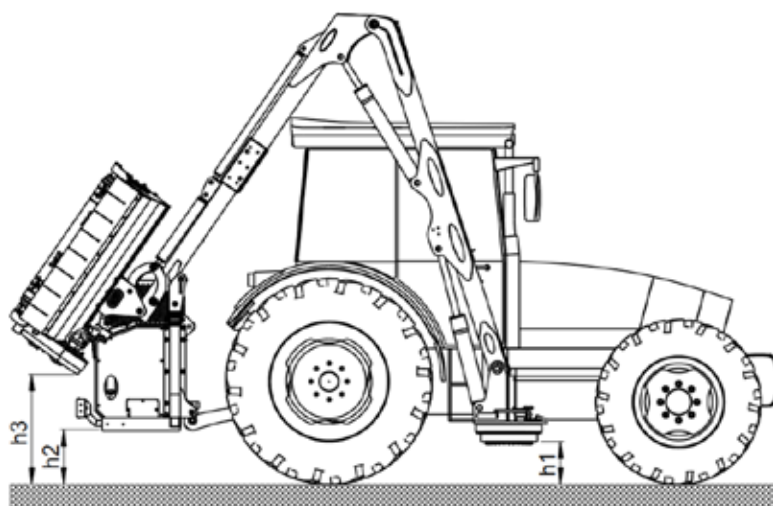
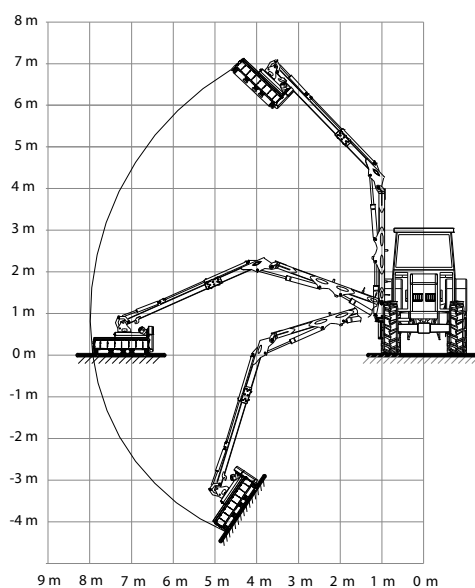


### KAN

KAN is a ditch cleaner, designed for cleaning and profiling ditches along roads.



**Mower operating reach diagram**



	BRKT		8000
A	Mower width from the middle to the extreme right edge	mm	1560
B	Total mower width		2680
H	Total mower height		~ 3700
h1	Distance of mounting point from the ground		300
h2	Distance of power unit from the ground		400
h3	Distance of working tool from the ground		800



**RASCO d.o.o.**  
Kolodvorska 120b  
HR - 48361 Kalinovac  
CROATIA



+385 48 883 112



rasco@rasco.hr



RascoCompany



Rasco\_company



RascoTV



RASCO d.o.o.